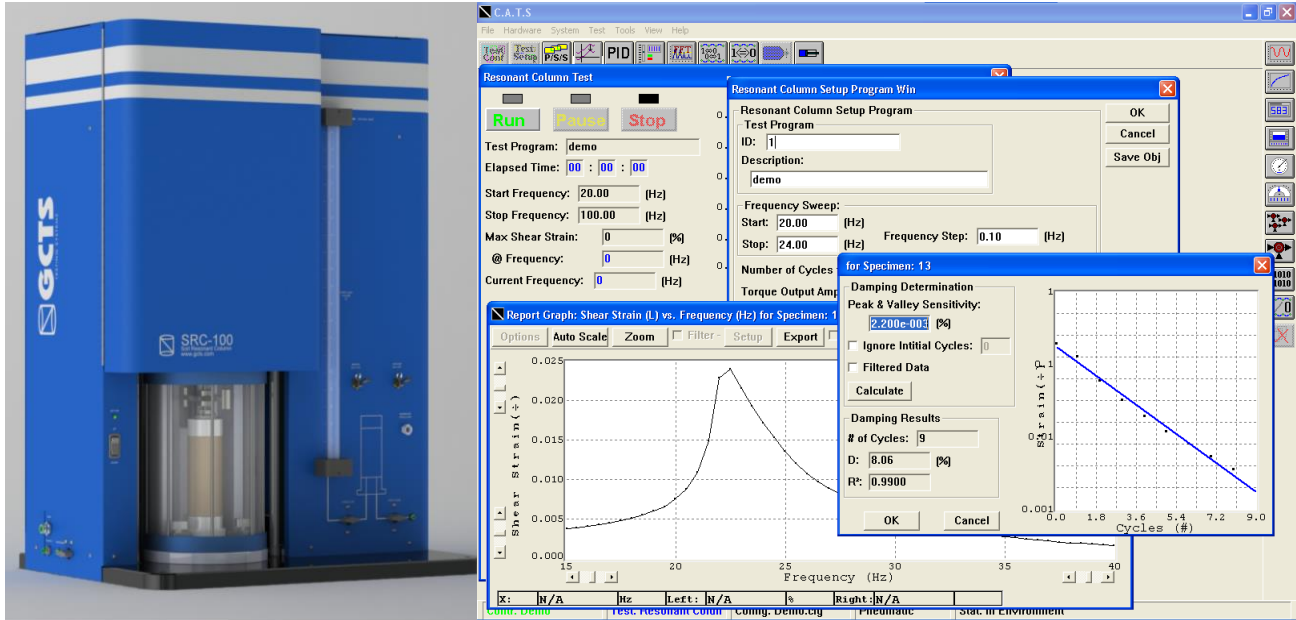


## Soil Resonant Column / Torsional Shear Testing System (SRC-100)



### KEY SPECIFICATIONS

Maximum Resonant Column Test frequency	500 Hz
Maximum Torsional Shear test frequency	50 Hz
Specimen diameters - Solid Specimens	70 mm, 50 mm, and 38 mm
Hollow Specimens	70 mm OD by 38 mm ID
Maximum Specimen Height	160 mm
Shear Strain Range	2x10 <sup>-5</sup> % to 1% typical
Shear Strain Resolution	2x10 <sup>-5</sup> % typical
Maximum Torque Capacity	2.33 N-M
Axial Displacement Range of Torque Motor	25 mm
Load Frame Axial Load Capacity	10 kN
Load Frame Axial Displacement Range	50 mm
Maximum Cell Pressure Capacity	1,000 kPa
Dynamic Data Acquisition Rate	50 kHz
Static Acquisition Rate	2 kHz
Total Signal Conditioning and Analog Inputs	8 channels
Allows Anisotropic Consolidation Stress	Resonant Column and Torsional Shear tests