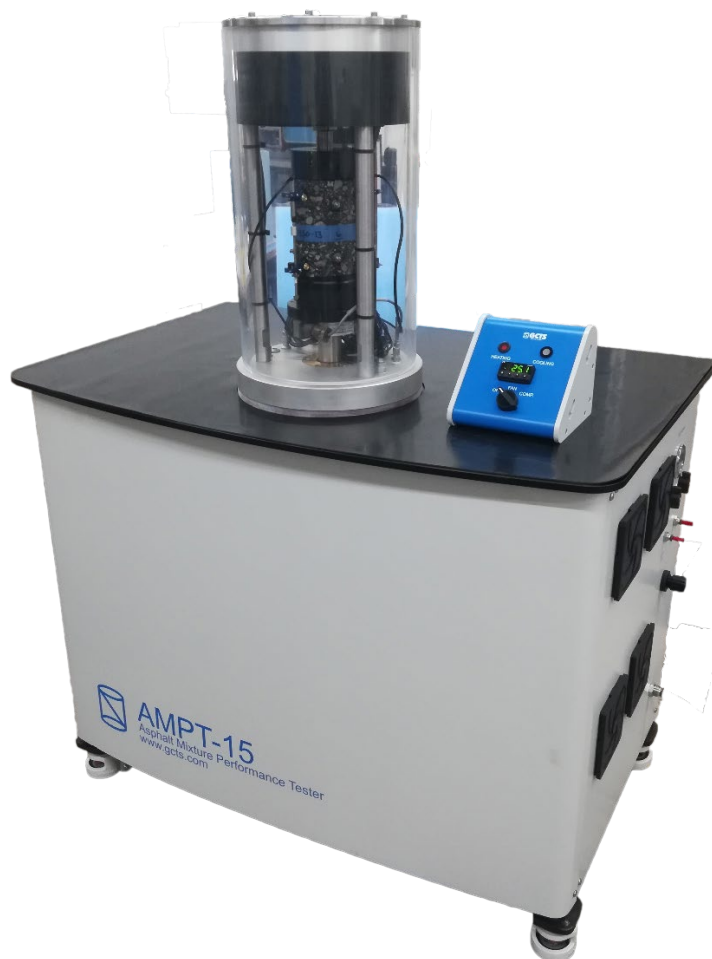


Asphalt Mixture Performance Tester (AMPT-15)



- Temperature Control Range from -10 °C to +70 °C
- 19 kN Axial Load Capacity
- 50 mm (± 25 mm) Stroke
- 250 kPa Confining Pressure Capacity
- Loading frequency up to 25 Hz (70 Hz servo valve)
- Modular Design with Accurate and Easy-to-use Software and Electronics
- Meets the NCHRP 9-19, 9-29, AASHTO T 378, AASHTO T 342, AASHTO R 84 standards
- Available Fixtures for Range of Asphalt Tests, including dynamic complex modulus, flow number, flow time, indirect tension, beam flexural fatigue, resilient modulus, direct tension, and more

DESCRIPTION

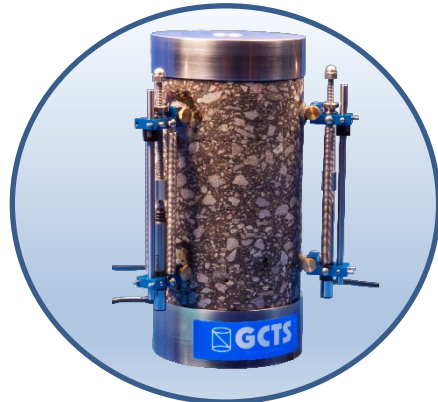
The AMPT-15 is a servo-hydraulic Asphalt Mixture Performance Tester designed to perform dynamic modulus, flow number and flow time tests as specified by NCHRP, AASHTO and other relevant standards. The AMPT-15 is designed to maximize test efficiency through intuitive design and innovative software.

The tests can be performed at a range of temperatures and frequencies to simulate traffic loading and environmental conditions. The test results are used as design inputs in the mechanistic pavement mix design. The AMPT-15 automatically performs the specified standard tests with minimal user intervention.

GCTS offers a remote test monitoring package, which allows the user to check the status of any test via a smartphone app.

AMPT-15

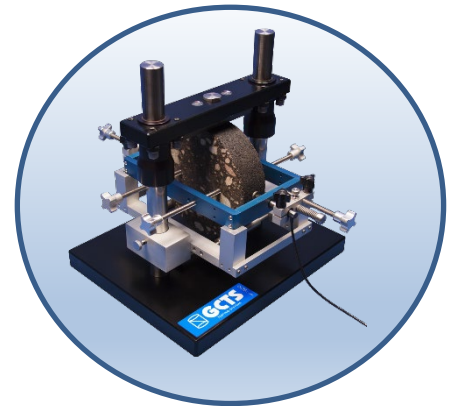
Advanced Pavement Performance Tests



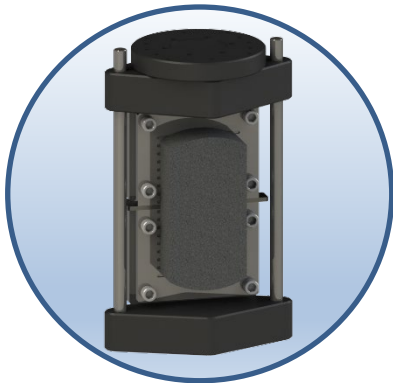
Dynamic Complex Modulus



Beam Flexural Fatigue



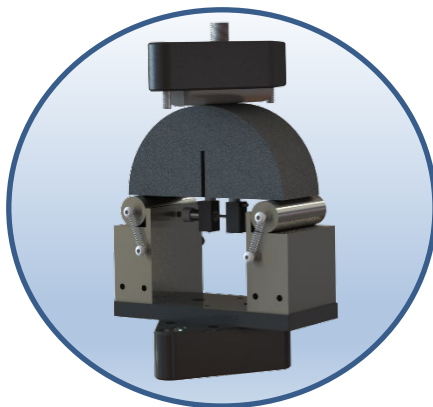
Indirect Tension



Texas Overlay



Resilient Modulus



Semi-Circular Bending
(I-FIT)



Direct Tension