

Digital Signal Input and Control Unit (SCON-300)

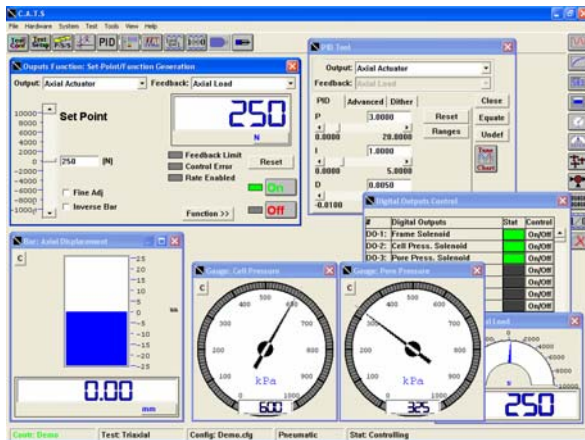


- 850 MHz micro-processor with 64 MB RAM and 64 MB solid state disk.
- 4 kHz maximum loop rate (up to 100 kHz conversion rate between channels.)
- Adaptive digital servo control with Windows™ (NT/2000/XP) interface software.
- Accepts up to 16 ± 10 VDC Inputs from external signal conditioning units
- 16-bit resolution.
- 6 channels with ± 10 VDC outputs to servo amplifier units
- 4 digital inputs and 4 digital outputs
- Motor on/off control signal.
- TCP/IP and RS-232 Communications

Included with this system is a true 32-bit Windows™ GCTS CATS Standard software (Windows NT/2000/XP) Graphical User Interface with a Universal Test module that allows you to create a variety of wave forms. The standard system also includes calculated inputs from one or several analog channels that can be servo controlled or monitored in real time.

Any system sensor can then be used to provide advanced servo control with "on-the-fly bump less" transfer switching between any connected transducer or calculated inputs.

In addition, several programs are offered within the CATS software environment including Triaxial Test, Direct Shear, Resilient Modulus Test, Unsaturated Soil Test, Simple Shear Test, etc. Contact GCTS for more information on available application modules.



The SCON-300 is the most cost effective method to upgrade an existing testing system to take advantage of the GCTS Windows™ CATS software, increasing the resolution of the testing system by including 16 bit inputs. And, different equipment configurations can be saved within the software making it easy to change sensors like load cells or deformation transducers.

The SCON-300 can be upgraded with the CATS Advanced software, increasing the abilities of the testing system. Please see the information regarding the CATS Advanced software for more information.

DESCRIPTION

The SCON-300 features an integrated 850 MHz microprocessor based digital servo controller and includes the CATS Standard software. This is a complete and self-contained module featuring built in function generator, data acquisition, and digital I/O unit. With the utilization of an external signal conditioning unit this system can accept signal inputs from load cells, pressure transducers, LVDTs, or other analog input signals.

SPECIFICATIONS

Electrical: 90-260 VAC / 50-60 Hz
. 3.5 Amps max.

Dimensions: 430 mm x 380 mm x 270 mm (WxDxH)
Weight : 14 kg.